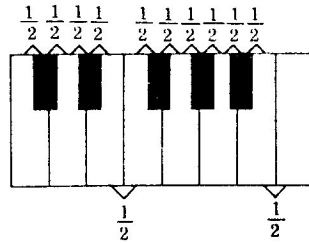


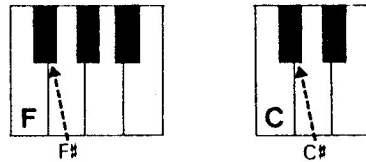
# SHARPS

# A sharp is a sign which indicates that a note is to be played  $\frac{1}{2}$  step higher.

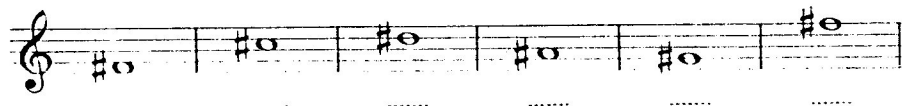
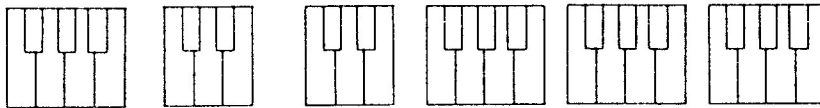
The entire Piano or Organ keyboard is made up of half steps.



Therefore, a sharp is played on the very next key to the right. ( $\frac{1}{2}$  step higher).



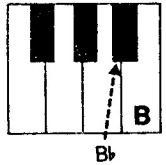
Write in the name of the sharped note and darken the correct black key:



# FLATS

b A flat is a sign which indicates that a note is to be played  $\frac{1}{2}$  step lower.

A flat is played on the very next key to the left. ( $\frac{1}{2}$  step lower).



Write in the name of the flatted or sharped note and darken the correct black key:

